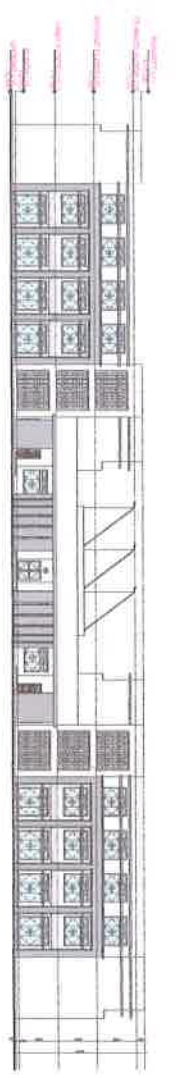


GROUND FLOOR PLAN

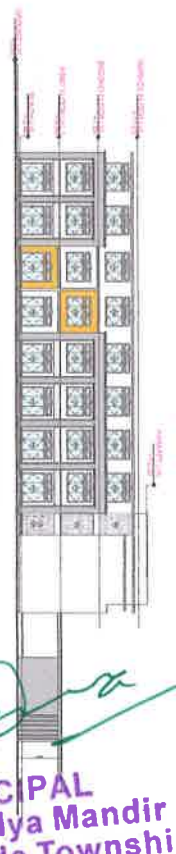
FIRST FLOOR PLAN

SECOND FLOOR PLAN

NET PLAN
(NOT TO SCALE)



WEST SIDE ELEVATION
(SCALE 1 : 200)



NORTH SIDE ELEVATION
(SCALE 1 : 200)

Sl. No.	Room No.	Room Name	Area (sq.m)	Volume (cu.m)
1	101	Principal's Office	15.00	45.00
2	102	Head Teacher's Office	15.00	45.00
3	103	Accountant's Office	15.00	45.00
4	104	Library	15.00	45.00
5	105	Staff Room	15.00	45.00
6	106	Play Field	15.00	45.00
7	107	Classroom	15.00	45.00
8	108	Classroom	15.00	45.00
9	109	Classroom	15.00	45.00
10	110	Classroom	15.00	45.00
11	111	Classroom	15.00	45.00
12	112	Classroom	15.00	45.00
13	113	Classroom	15.00	45.00
14	114	Classroom	15.00	45.00
15	115	Classroom	15.00	45.00
16	116	Classroom	15.00	45.00
17	117	Classroom	15.00	45.00
18	118	Classroom	15.00	45.00
19	119	Classroom	15.00	45.00
20	120	Classroom	15.00	45.00
21	121	Classroom	15.00	45.00
22	122	Classroom	15.00	45.00
23	123	Classroom	15.00	45.00
24	124	Classroom	15.00	45.00
25	125	Classroom	15.00	45.00
26	126	Classroom	15.00	45.00
27	127	Classroom	15.00	45.00
28	128	Classroom	15.00	45.00
29	129	Classroom	15.00	45.00
30	130	Classroom	15.00	45.00
31	131	Classroom	15.00	45.00
32	132	Classroom	15.00	45.00
33	133	Classroom	15.00	45.00
34	134	Classroom	15.00	45.00
35	135	Classroom	15.00	45.00
36	136	Classroom	15.00	45.00
37	137	Classroom	15.00	45.00
38	138	Classroom	15.00	45.00
39	139	Classroom	15.00	45.00
40	140	Classroom	15.00	45.00
41	141	Classroom	15.00	45.00
42	142	Classroom	15.00	45.00
43	143	Classroom	15.00	45.00
44	144	Classroom	15.00	45.00
45	145	Classroom	15.00	45.00
46	146	Classroom	15.00	45.00
47	147	Classroom	15.00	45.00
48	148	Classroom	15.00	45.00
49	149	Classroom	15.00	45.00
50	150	Classroom	15.00	45.00

Sl. No.	Area	Net Area	Area	Net Area
1	Site	113.66 sq.m	340.27 sq.m	340.27 sq.m
2	Ground Floor	113.66 sq.m	340.27 sq.m	340.27 sq.m
3	First Floor	113.66 sq.m	340.27 sq.m	340.27 sq.m
4	Second Floor	113.66 sq.m	340.27 sq.m	340.27 sq.m
TOTAL				1019.85 sq.m

Plot Coverage = 46.38%
F.A.R = 0.87

AREA STATEMENT FOR JMW SCHOOL

NET AREA (D) = 1019.85 sq.m

NET AREA (C) = 1019.85 sq.m

NET AREA (B) = 1019.85 sq.m

NET AREA (A) = 1019.85 sq.m

NET AREA (D) = 1019.85 sq.m

NET AREA (E) = 1019.85 sq.m

NET AREA (F) = 1019.85 sq.m

NET AREA (G) = 1019.85 sq.m

NET AREA (H) = 1019.85 sq.m

NET AREA (I) = 1019.85 sq.m

NET AREA (J) = 1019.85 sq.m

NET AREA (K) = 1019.85 sq.m

NET AREA (L) = 1019.85 sq.m

NET AREA (M) = 1019.85 sq.m

NET AREA (N) = 1019.85 sq.m

NET AREA (O) = 1019.85 sq.m

NET AREA (P) = 1019.85 sq.m

NET AREA (Q) = 1019.85 sq.m

NET AREA (R) = 1019.85 sq.m

NET AREA (S) = 1019.85 sq.m

NET AREA (T) = 1019.85 sq.m

NET AREA (U) = 1019.85 sq.m

NET AREA (V) = 1019.85 sq.m

NET AREA (W) = 1019.85 sq.m

NET AREA (X) = 1019.85 sq.m

NET AREA (Y) = 1019.85 sq.m

NET AREA (Z) = 1019.85 sq.m

FOR KIND APPROVAL

NAME OF OWNER :-
JSW FOUNDATION

SIGNATURE OF THE ENGINEER WITH SEAL

PRINCIPAL
Jindal Vidya Mandir
S. Basapur, Vaddu (P)-583123.
Tq. Sandur, Dist. Ballari, Karnataka

Manager
Jindal Vidya Mandir
S. Basapur, Vaddu (P)-583123.
Tq. Sandur, Dist. Ballari, Karnataka

Steel Limited
P. O. VIDYAMANDIR - 583275
VILLAGE: TOBANAGALU TALUK: SANDUR
DISTRICT: BALLARI, KARNATAKA

DRG.NO:JSW/P/EN/1984/07/2862